

# ROUTING

for **you**



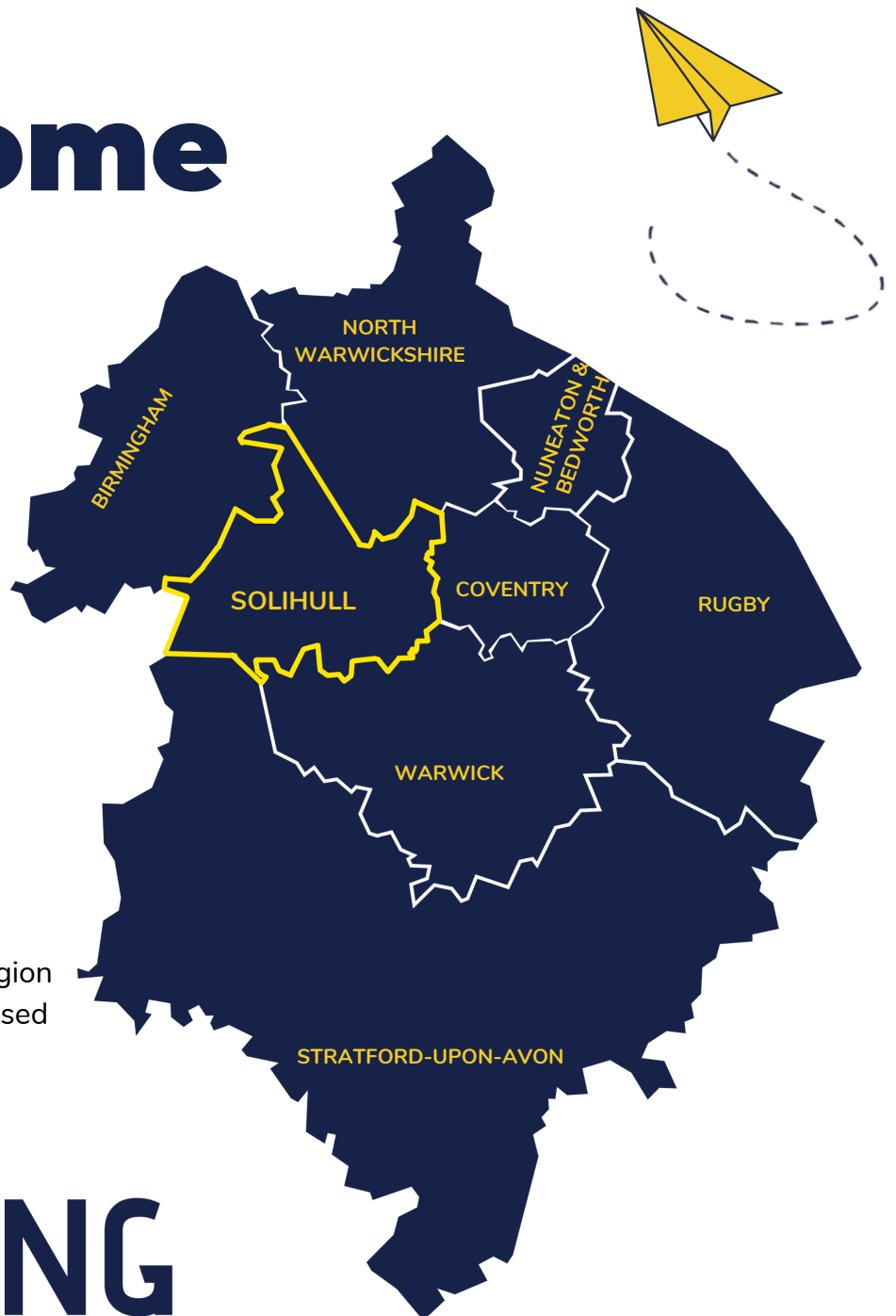
Mapping  
pathways to  
help **YOU**  
choose the right  
route to your  
future career.



# Welcome

Welcome to  
**Routing for you**, a  
brochure filled with  
**key information**  
about **different**  
**sectors and**  
**opportunities** that  
will help you **map**  
**out a future career.**

All the information is specific  
to your area and the wider region  
(shown to the right) and is based  
on key up-to-date data from  
the last two years.



## ROUTING for you



### Contents

- Introduction
- Transport links
- Advanced Manufacturing
- Business, Finance and Professional Services
- Creative Industries
- Energy Technology
- Life Science
- Tomorrow's working world – routes to priority sectors
- Value of part time work
- Different ways of working
- Useful links



# Career Routes for Young People

Solihull Careers Hub has developed Routing for you to inform young people about real opportunities available in Solihull and the wider region.

Understanding Local Labour Market Information (LMI) is the key to future growth and choosing routes into possible careers. We should all have the power and knowledge to navigate unique career pathways allowing us to take control of our futures. Routing for you provides up-to-date and comprehensive LMI for Solihull, Birmingham, Coventry and Warwickshire which will help guide GCSE and further education choices.

**We are laying down the tracks to create clear and simple routes to careers.**

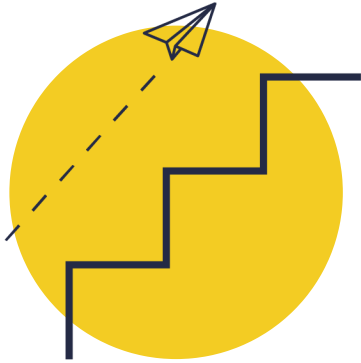
Working life continually changes, therefore observing current and future trends in the local area and the different ways in which we work can help plan future careers. When thinking about choices, it is useful to consider the local labour market and what's happening in the surrounding area.

**LMI provides the following insight:**

- Fundamental employment and workforce facts
- The number of people in certain types of jobs
- The jobs and skills employers value the most
- Which industries are recruiting and where they are located
- The growing or declining job areas and general employment trends relevant to you



# Did you know?



The Solihull economy is growing at a rate of 38% over recent years compared to the UK average of 20% over the same time.

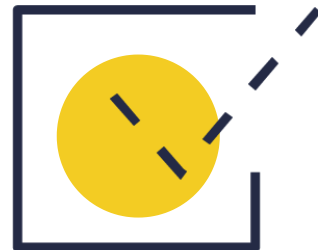


There are 103,500 employed people within Solihull, of which 26,500 work as professionals in areas such as law and finance.



**£41,000**

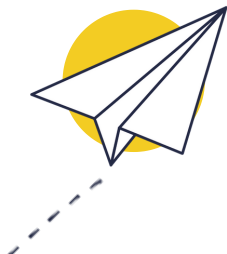
Solihull is the home to a Jaguar Land Rover factory, which employs over 9000 people in manufacturing roles with an average salary of around £41,000.



Solihull's most significant employment opportunities are in Manufacturing, Business Administration & Support Services, Retail, Professional Services, Scientific & Technical Services and Health Services.

## Top employability skills

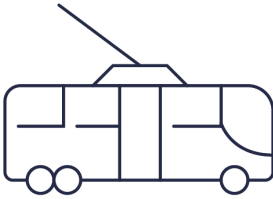
- Good communication
- Motivation and initiative
- Leadership
- Reliability
- Following instructions
- Team work
- Patience



**£649.20**

On average people working in Solihull earn £649.20 a week, which is almost £100 more than the average West Midlands weekly wage.

# Main Transport Links



**Solihull Train Station to...**  
(there is also Shirley train station)

**Birmingham...**  
Snow Hill Station (20 mins)  
Moor Street Station (12 mins)  
New Street Station (20 mins)  
International (30 mins)

**Coventry...**  
Coventry Train Station (52 mins)

**Warwickshire...**  
Stratford Upon Avon Train Station (29 mins)  
Stratford Upon Avon Parkway (24 mins)  
Warwick Railway Station (18 mins)



**Solihull Town Centre to...**  
(there is also Chelmsley Wood bus station)

**Birmingham...**  
Coach Station (40 mins)

**Coventry...**  
Pool Meadow Bus Station (47 mins)

**Warwickshire...**  
Warwick Bus Station (inc train 40 mins)

# What is Advanced Manufacturing?

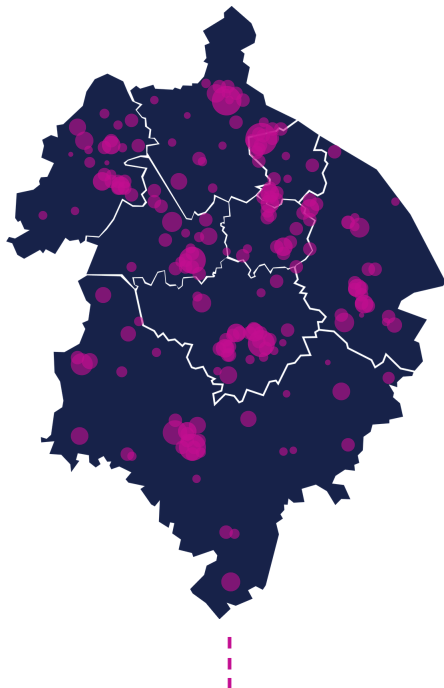
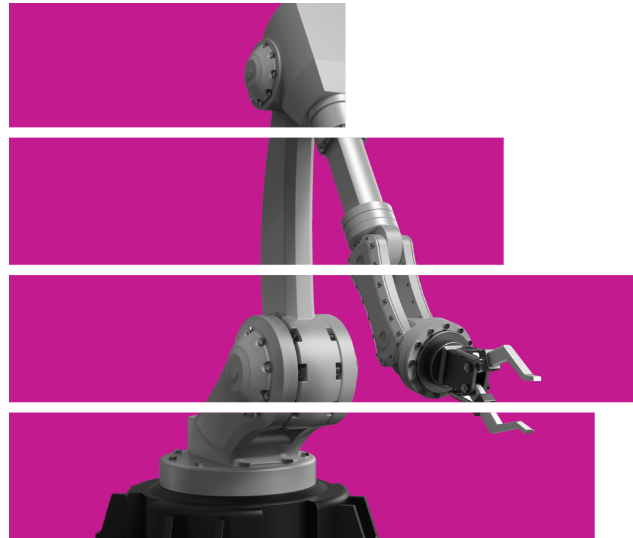
Advanced Manufacturing is the use of innovative technologies to improve products using advanced, cutting edge and often pioneering technology. It can also include high-tech processes such as automation and robotics supporting the rapid transfer of science and technology into the manufacture of products. This offers some of the most technologically ground-breaking and rewarding careers available.

## Think:

- High tech products and processes
- Electronics
- Computing
- Consoles and devices
- Nanotechnology
- 3D printing
- Virtual reality

## Example job roles and industries:

- Aerospace and Aeronautical
- Energy Industry
- Material Handling
- Medical Device Design
- Medical Technologies Industry
- Food Technologists



The heat map above indicates the number of jobs posted by employers during 2019, helping you to quickly recognise areas of high and low job density around you.



Did you know there is a scuba diving pizza delivery man hired to deliver pizzas to an underwater hotel in Florida? Without Advanced Manufacturing, there would be no watertight container, no scuba diving kit and no underwater hotel.

# Why Advanced Manufacturing?

Advanced Manufacturing includes many different skills and jobs and when you explore the possibilities, you will see it is built into everything that we do. Advanced Manufacturing uses modern technologies that continuously develop and change to be better, stronger and faster.

So, whether you are intrigued by information technology, compelled by computing, mad about make-up, crazy about cars or inspired by invention this could be a sector for you.



In the West Midlands, there are approximately 311,586 people employed in Manufacturing. That makes up to 12.3% of the total people employed in the region.



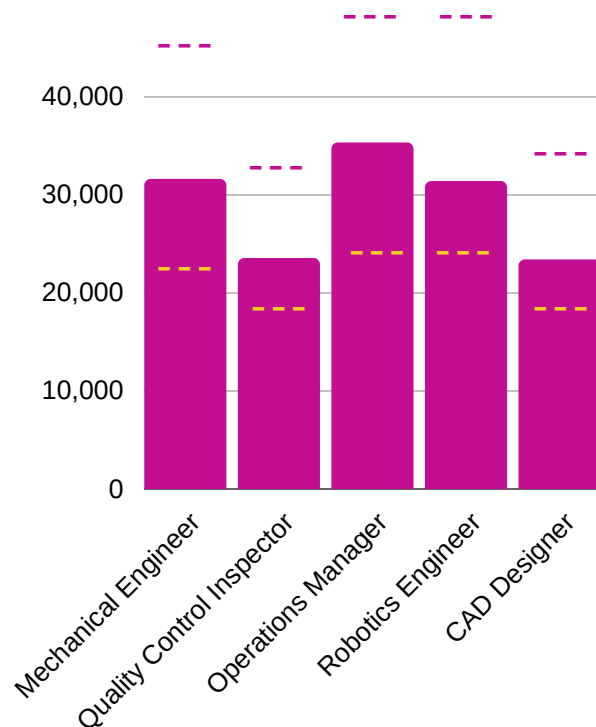
Women only represent 12% of the engineering workforce but 47% of the overall UK workforce

## Top 100

One of the UK's top 100 Apprentice employers is a £36m Advanced Manufacturing Training Centre (AMTC) in Ansty Park, Warwickshire. It's a flagship facility for advanced apprenticeship programmes.

### Average Salary in UK

--- Can earn up to  
--- Average starting salary

A white rocket launching upwards from a dark blue circular background, with white smoke at the base.

**Consider a career with truly limitless opportunities**

You could be a Spacecraft and Satellites Designer earning around £60,000.



**£50,000**

Mid-level, lead or principle  
Engineers earn around  
£35,000 to £50,000.

### Did you know?

You can branch into aerospace, medical, structural, or robotic, by taking specific modules.

### Did you know?

Some universities offer placement years which allow you to spend time in industry.

# Mechanical Engineer

**Starting salaries for Mechanical Engineers, and for those on graduate training schemes, are in the range of £20,000 to £28,000.**

## Apprenticeships

There are approximately 90 apprenticeships in the Engineering Sector available in England, with more in development. Each apprenticeship sets out occupational standards for specific job roles, designed by employers. The standards outline the skills, knowledge, and behaviours required to demonstrate that an apprentice is fully competent in the job role.



Solihull College offer engineering courses that you can do straight after your GCSEs

## Other Courses

Pearson BTEC National Extended Diploma  
Pearson BTEC Level 3 National Diploma  
Pearson BTEC National Foundation Diploma  
Pearson BTEC Level 3 National Extended Certificate  
Access to HE Diploma

## University

Don't expect to be sitting in lectures and seminars for the entirety of your degree, which will generally last three or four years. During that time, you'll be involved in lots of practical and demonstration sessions, as well as laboratory and workshop lessons. Engineering graduates are awarded a BEng, rather than the more common BA or BSc.



Did you know Ferrari engines are engineered to sound perfect by utilizing 3rd and 6th harmonics on the air intake, like an organ or flute.

## A Levels

Entry requirements range from CCC to A\*AA, with the universities and colleges most commonly asking for AAB. Maths and Physics are generally the most important subjects. Other subjects that will support applications: further maths, design technology, computing, product design, and the other sciences.

# School

You would be expected to secure 5 GCSEs at grade 4 or higher in Maths, English Literature and Science. Qualifications in Design and Technology and Engineering are also advantageous if your school offers them.



# Did you know?

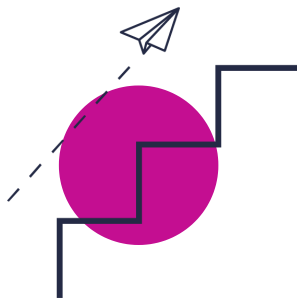


**Rowan Atkinson  
Mr Bean**

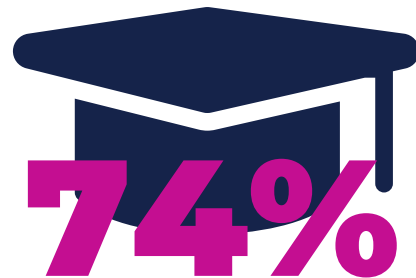
has a degree in  
Electrical Engineering.



Engineer Nathaniel Baldwin invented the first pair of audio headphones on his kitchen table in 1910. Initially dismissed by sceptical investors, the headphones were picked up by the US Navy, who ordered 100 pairs and made the engineer rich.



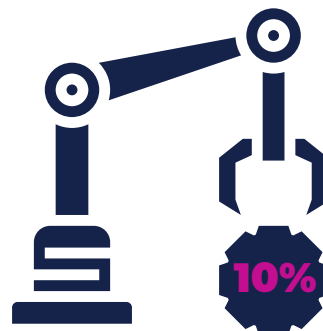
On average, salaries in Manufacturing in 2019 were £34,538, which is 14% higher than the rest of the economy, which sat at £30,629.



Not many Job postings in 2019 stated desirable qualifications, but of those that did, 74% required applicants to have a level 4 or higher qualification.



In the Automotive Industry, Solihull, Coventry, Warwickshire and Birmingham, offer a whopping 30,000 positions.



This sector makes up more than 10% of all jobs within the area.

# What is Business, Professional and Financial Sector?

This sector is a significant employer in the UK with Greater Birmingham being the UK's largest financial and professional services centre outside London. The list of careers and opportunities is far and wide and includes the four following areas:

**Business Services** - This includes day-to-day office administrative services and routine business support functions.

**Employment Services** - This includes activities of listing employment vacancies and supplying workers to client's businesses.

**Financial Services** - This includes banking, insurance and pension activities, and the activities of holding companies, trusts and funds.

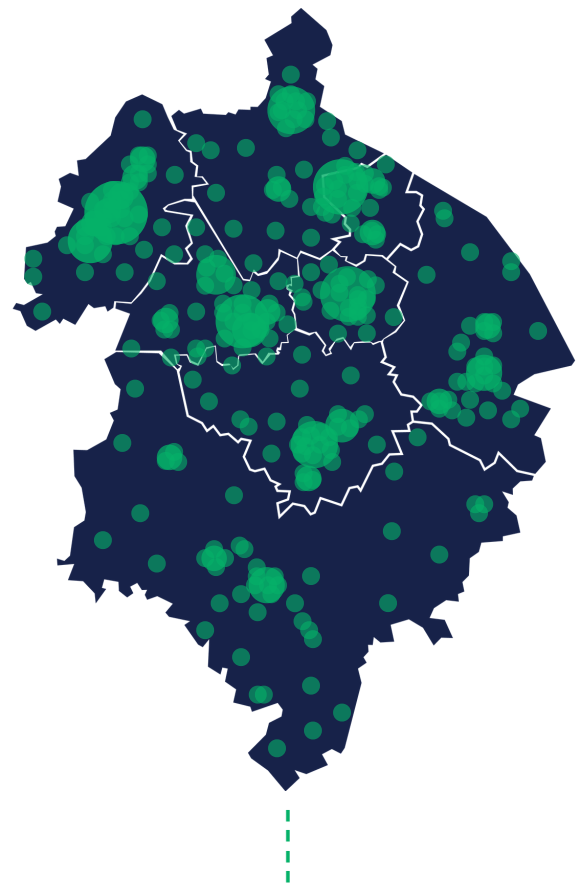
**Professional Services** - This includes specialised professional, scientific and technical activities. Also, legal representation and other activities of civil law.

## Example job roles and industries

- Lawyer
- Accountant
- Sales Representative
- Company Director
- Underwriter
- Auctioneer
- Judge
- Coroner
- Valuer

# 362,110

Across Solihull and the wider region, the total amount of jobs in the Business, Professional & Financial Sector amounted to 362,110.



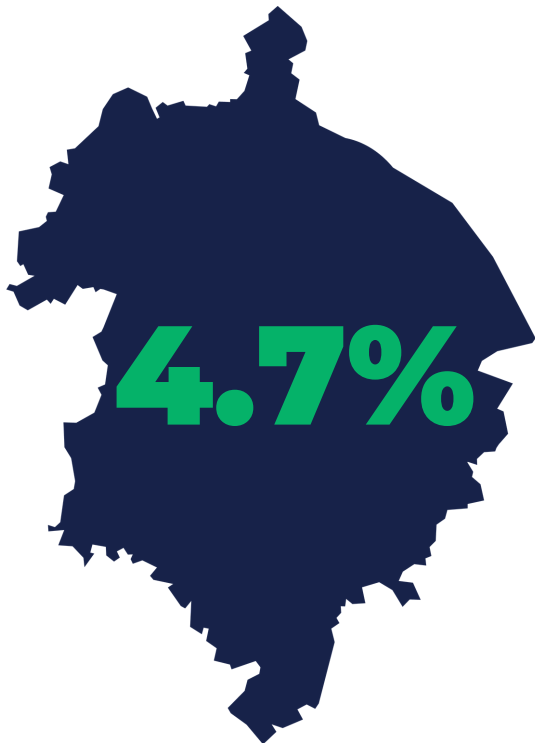
The heat map above indicates the number of jobs posted by employers during 2019, helping you to quickly recognise areas of high and low job density around you.

# Why Business, Professional and Financial Sector?

The world of business, finance and professional services are far and wide giving incredible opportunities, across multiple sectors and industries. The sector, often linked to technological advances, regulatory change and global competition, combines specialised skills, such as accounting, with knowledge of digital technologies.

- Love numbers and cars? Consider being an accountant working for Jaguar Land Rover.
- Drawn to the idea of flexible hours or working for multiple organisations? Consider a career as a consultant specialising in Data Protection.
- Are you excited by the idea of defending clients' interests and providing expert advice? Consider becoming a Solicitor.
- Want to be your own boss? Look at Ben Francis, founder and majority shareholder of Gymshark.

You can be what ever you want to be.

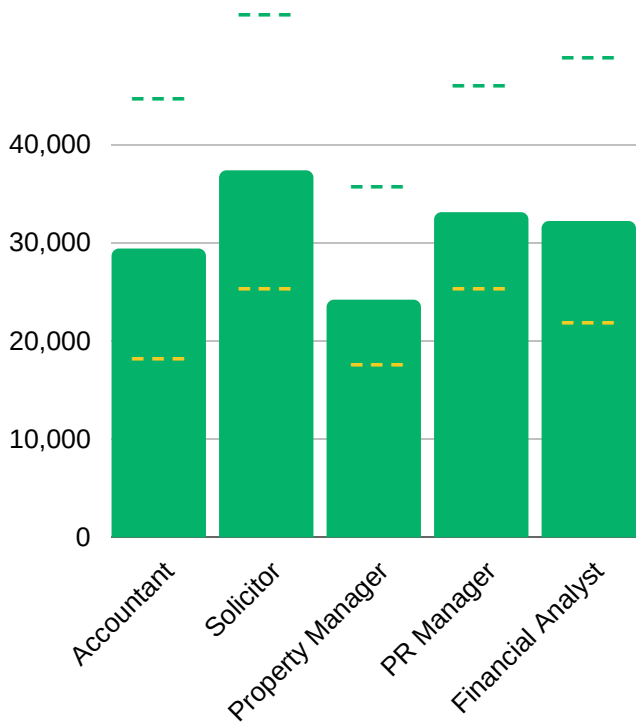


4.7% of the working population across Solihull and the wider region work in administrative and support services totalling 119,833 people.

## Average Salary in UK

--- Can earn up to

--- Average starting salary



In 2018 there were 97,750 jobs in the Recruitment & HR Sector within Solihull and the wider region.



**£100,000**

With the right combination of qualifications, skills, experience, and location you can earn in excess of £100,000.

## Did you know?

You can become a junior underwriter and work your way up by doing qualifications on the job as long as you have GCSEs in English and Maths, 1 or 2 A levels and can use office software, including Excel spreadsheets.

## Did you know?

Many of the large insurance companies offer structured graduate training schemes in underwriting.

# Insurance Underwriter

**Trainee underwriters on graduate schemes can earn up to £30,000.**

## Apprenticeships

You could start by doing an advanced apprenticeship in providing financial services insurance or an insurance practitioner advanced apprenticeship. You could also take an insurance professional higher apprenticeship, depending on your background and qualifications.

## University

You don't need a specific degree subject to become an insurance underwriter but relevant degrees that are looked favourably on are in business studies, finance, economics and maths. Relevant work experience whilst you're studying, for example through an internship, will also help.

## Other Courses

Access to Higher Education Diploma, International Baccalaureate Diploma, Level 3 Award, Certificate, Diploma, ESOL, National Certificate, National Diploma or NVQ.

## A Levels

Specific A Levels are not required but maths and economics are considered advantageous.

# School

You will need 5 GCSEs at grades 9 to 4 (A\* to C), or equivalent, including English and maths.

# Did you know?



Venus Williams the tennis pro and former world No. 1 pursued a degree in Business Administration at Indiana University.



## 90,000

By 2035 experts predict there will be 90,000 jobs in the sector, with a significant demand to replace the existing workforce that is due to retire over the next 15 years.



Solihull is a hub for business and finance drawing interest from global corporations including McCann Ericsson, Cogent Elliott, Paragon Finance and Secure Trust Bank.



**Rebel Wilson and Dwayne "The Rock" Johnson**

have degrees in Law and Criminology respectively.



## £45,000

Project Managers plan and organise tasks, people and resources to complete projects on time and within budget. You could earn up to £45,000 per year as a Project Manager depending on where you were based.



## 58,000

The sector welcomes young people through a range of placements, apprenticeships and further training and in Solihull alone employs a staggering 58,000 people.

# What is the Creative Industries Sector?

Creative industries are those based on creativity, skill and talent, or which have the potential to create wealth and jobs through the development or production of intellectual property. Together they make an essential contribution to our national wealth and international reputation.

## The industry includes:

- Advertising & Marketing
- Architecture
- Crafts
- Design
- Film, TV, Radio & Photography
- IT, Software & Computer Services
- Museums, Galleries & Libraries
- Performing Arts

## Example job roles:

- Journalist
- Illustrator
- Actor
- Film Director
- Graphic Designer
- Fashion Designer
- Photographer
- Composer
- Architect
- Marketeer
- Librarian



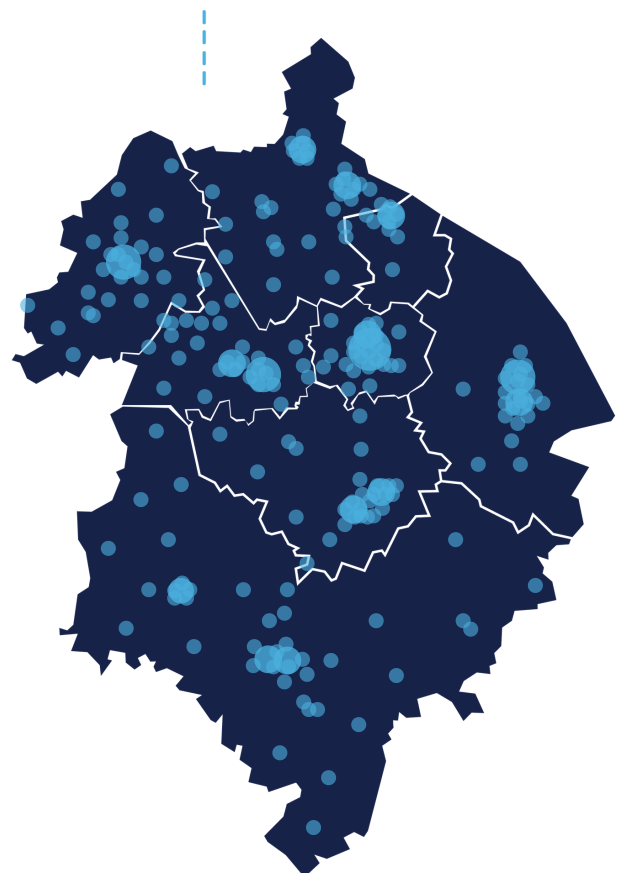
The heat map below indicates the number of jobs posted by employers during 2019, helping you to quickly recognise areas of high and low job density around you.



London's housing shortage crisis led to architects crafting new properties that can float on water. Baca Architects created the new role of creating amphibious houses offering around £35,000 for a salary.

**44,343**  
**jobs in 2019**

In 2019 there were 44,343 job postings for creative industry occupations in Solihull, Birmingham, Coventry and Warwickshire.



# Why Creative Industries?

The creative industry is hugely important to the West Midlands, contributing almost £4 billion to our economy. More than 10,000 creative businesses reside in the West Midlands, and the West Midlands Combined Authority aims to have over 100,000 people employed in this sector by 2030.

The creative industries offer a unique platform to showcase talents in a world of imagination and creativity. Maybe you have been gifted with a knack for singing and dancing, love to draw and paint, spend your days with your nose buried in books or love to get crafty. Nothing is stopping you creating a route to follow your dreams.

## Skills that are often required in this sector are:

- Imagination
- Creativity
- Problem solving
- Organisation
- Communication
- Planning
- Analysis



Between 2015 and 2018 publishing of computer games roles increased by 200% and television programming and broadcasting roles increased by 249% in Solihull and the wider region.

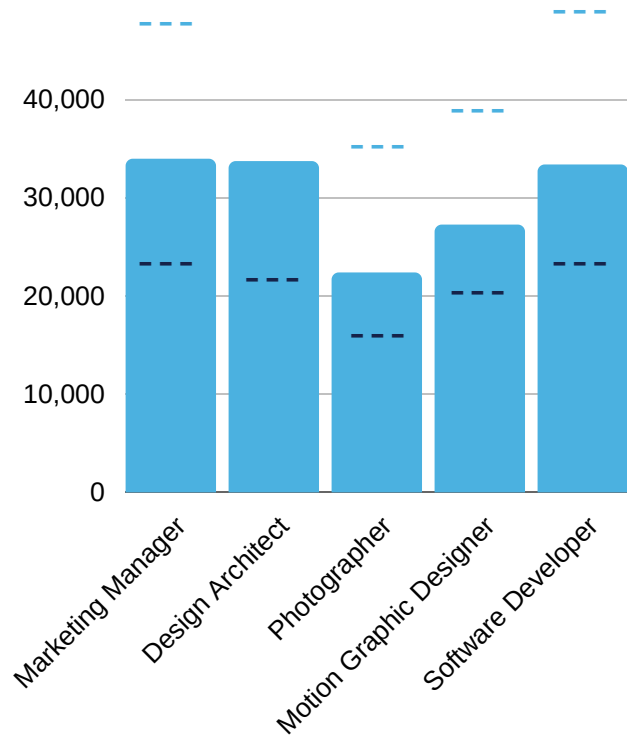


Want a job in the TV industry? Why not become a Gross Stunt Tester? For every person who chomps down a grasshopper on a TV show, there are people behind the scenes who've tested it out first.

## Average Salary in UK

--- Can earn up to

--- Average starting salary



During the first four decades of the modern Olympic Games, 151 medals were awarded for music, painting, sculpture, literature, and architecture. Art was considered an essential part of the competition. Now 128 years on, in 2024 breakdancing has been introduced to the games.



Famous twins James and Oliver Phelps born in Sutton Coldfield starred in the Harry Potter films as Fred and George Weasley. They are reported to have an estimated net worth of a little over £1million each.



**£70,000**

At senior associate, partner, or director level you'll typically earn up to £70,000.

## Did you know?

The Sims is one of the most popular video games around, but before it became a life simulator the original concept had players designing buildings, it was an Architecture Simulator.

## Did you know?

More time has passed between the start and end of construction on the Great Wall of China than between the start of Christianity and today.

# Architect

**As a fully qualified (Part 3) Architect, depending on your experience you could earn between £32,000 and £45,000.**

## Apprenticeships

Two types of apprenticeship are available. On completion of the Level 6 architectural assistant apprenticeship you'll earn a Bachelors degree and Part 1 qualification. On the Level 7 architect apprenticeship, you'll obtain a Masters of Architecture (MArch) and Part 2/3 qualifications.

Find out more about these degree apprenticeships and how to find one here: [www.architecture.com/education-cpd-and-careers/apprenticeships](http://www.architecture.com/education-cpd-and-careers/apprenticeships)

## University

Part 1 - An undergraduate degree taking three to four years to complete full time.

Part 1 practical experience - Taking a minimum of one year out, you'll need to find an employer, mentor and advisor to log your experience with RIBA's Professional Experience & Development Record (PEDR).

Part 2 - Bachelors of Architecture (BArch), Diploma or Master of Architecture (MArch).

Part 2 practical experience - A total of 24 months' experience is required to advance.

Part 3 - This involves a written and oral examination as well as assessment of your previous experience.

## Other Courses

Other Level 3 courses (e.g. science or engineering) may be acceptable for entry to a recognised degree at some universities but will need to be checked with them directly

## A Levels

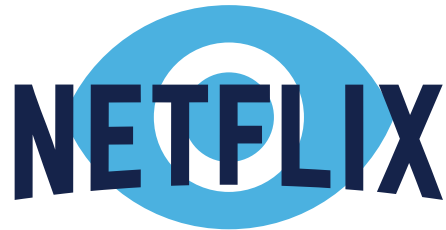
To get on to a related degree, you will usually need a minimum of two A Levels, with three A Levels and A/B grades required for the most popular courses. Entry requirements range from CCD to AAB, with the universities and colleges most commonly asking for BBB.

# School

5 GCSEs at grades 9 to 4 (A\* to C), or equivalent, including English, maths and science.



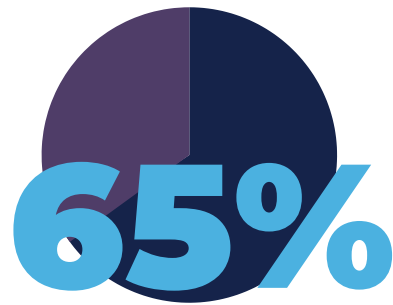
# Did you know?



Want to be paid to watch TV all day?  
Netflix hires someone to watch all their  
content, review and assign each program  
with a correct tag to help us find something  
to watch.



Taking part in music is actually proven  
to raise attainment in maths.



65% of advertising & marketing job  
postings in the wider region in 2019 were  
in Birmingham.



13% of all Solihull and the wider  
region job postings in 2019 were  
within the creative sector.



The highest increase in roles within Solihull  
and the wider region was Digital Marketing  
Executive. This role could see you earning  
£45,000 at senior level.

# What is Energy Technology?

The Energy technology industry concerns itself with the use of renewable and natural sources of energy, such as:

- Wind
- Sunlight
- Geothermal heat
- Tides

This industry is absolutely crucial whilst the world we live in changes daily. You could quite literally be saving the earth whilst working in a job that improves the lives of others. Sound good to you?

Careers in this sector are vast, essential and fulfilling with more and more people recognising its value every single day.

**Do you see yourself working at the forefront of technologies, playing a central role in helping to combat the impacts of climate change? Then this industry could be for you.**

Within renewable energy, you could work in a range of environments, indoor or outdoor, from a lab to an adventurous location. This sector is growing in strength locally, playing a part in the protection of the local environment.

## Example job roles

- Project Managers
- Environmental Researchers
- Nuclear Power Reactor Operators
- Digital Energy Specialists
- Solar Fabricators and Installers
- Wind Turbine Farmers

The heat map to the right indicates the number of jobs posted by employers during 2019, helping you to quickly recognise areas of high and low job density around you.



**1,000,000,  
000,000**

This global industry is predicted to be worth a staggering 1.1 TRILLION pounds by 2025!



# Why Energy Technology?

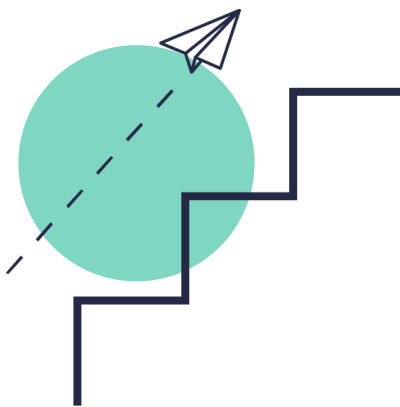
A career in this industry offers fantastic opportunities and possibilities that we aren't even aware of yet. This industry is a rapidly growing, widely recognised and a highly valued area in which you can develop a fantastic career.

**Otherwise known as clean energy or green energy, the renewable energy sector and its emerging technologies are booming.**

As energy technologies continue to develop and thrive, so will the number of jobs. Recently, from one event alone, 11 projects confirmed to be worth a massive £176 million, per year, could create thousands of jobs across the UK, including the West Midlands.

Universities of Aston, Birmingham, and Warwick are three of the six partners in the energy research accelerator announced by HM treasury. The purpose is to help develop the next generation of energy leaders, giving young people like you, the power to shape the future of the UK's energy landscape.

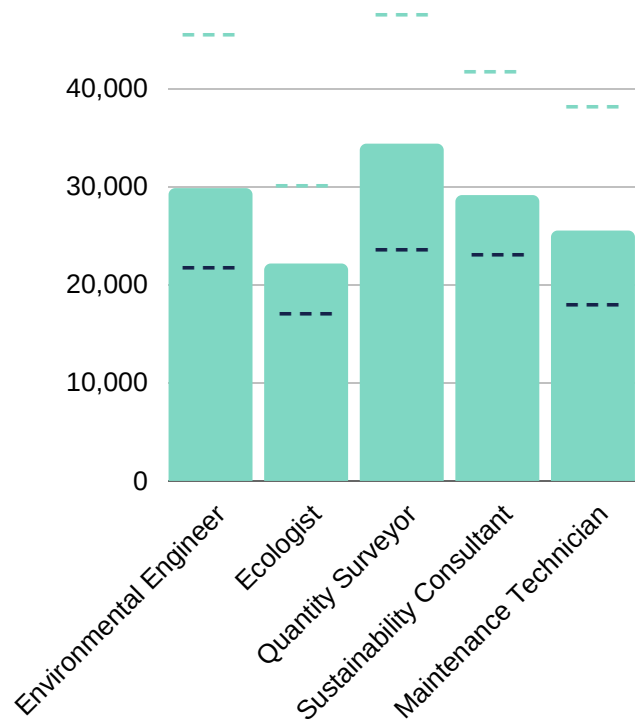
You can choose from a range of options, such as apprenticeships and internships, when pursuing a career in the Energy Technology sector. However, a Bachelor's degree in science is highly desirable. If you do choose a degree chemistry, biology or sustainability are great considerations.



900% increase in the number of jobs within the sub-sector Trade of Electricity and 500% increase in Collection of Hazardous Waste between 2015-2018.

## Average Salary in UK

--- Can earn up to  
--- Average starting salary



A recently listed position for a company based in Birmingham as a Field Sales Representative within this sector was offering up to £80,000 per year.



Environmental Engineers were the most popular job role in this sector in 2019.



# £42,000

With experience a Wind Turbine Technician can earn up to £42,000.

## Did you know?

With further training, you could work as an Operations and Maintenance Manager, Control Systems Engineer or Energy Engineer.

## Did you know?

Demand for Wind Turbine Technicians is predicted to grow over the next 10 years, with older wind farms being replaced or refurbished, as they come to the end of their working lives.

# Wind Turbine Technician

**A Wind Turbine Technician will usually start on around £23,000.**

## Apprenticeships

There are many apprenticeships on offer for example, Engineering Technician or Maintenance and Operations Engineering Technician, as well as advanced and higher apprenticeships for example, Manufacturing Engineering: Wind Generation apprenticeships.



The largest wind turbine in the world is in Hawaii, USA. It stands 20 stories tall and has blades the length of a football field!

## University

University Degree options include renewable energy engineering, electrical or mechanical engineering and electrical power engineering.



You can do a Foundation Degree and top up in Mechanical Engineering at Solihull College.

## Other Courses

- Level 3 Certificate in Mechanical or Electrical Engineering
- Level 3 Diploma in Maintenance Engineering Technology

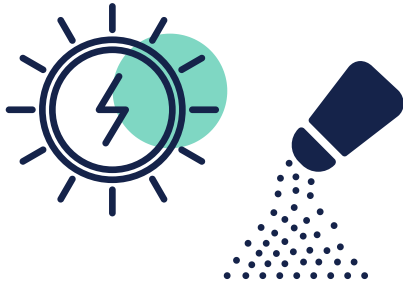
## A Levels

- 1 or 2 A Levels (including at least one STEM subject) are needed for a foundation degree or higher national diploma
- 2 to 3 A Levels (including at least one STEM subject) are needed for a degree.

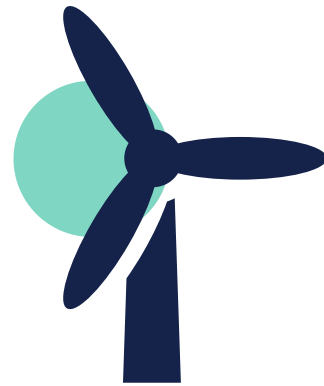
# School

5 GCSEs at grades 9 to 4 (A\* to C), or equivalent, including English, maths and science.

# Did you know?



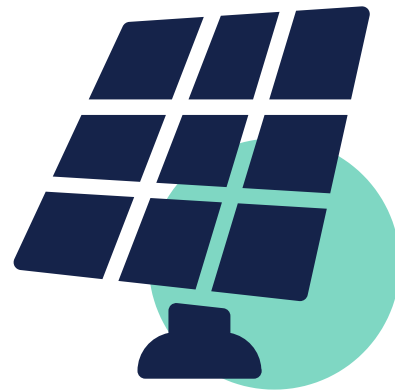
The sunlight that hits the earth in just 1 hour can supply the world's power demands for an entire year. All of which can all be stored in salt.



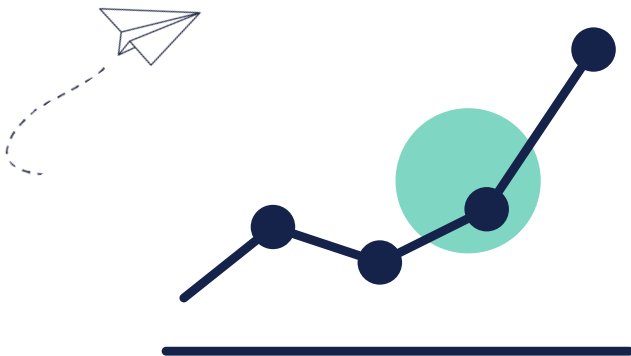
A single wind turbine can power thousands of homes.



Job postings in this sector grew by 27% between 2016 and 2019 in Birmingham but fell by -21% in Coventry. Overall, however, within the wider region, jobs increased by 9%. That's an extra 561 jobs in just three years.



In 1921 Albert Einstein was awarded the Nobel Prize in Physics for his discovery of the photoelectric effect – which led to the invention of solar panels.



The Energy Technology sector is one of the most rapidly growing industries in the world.

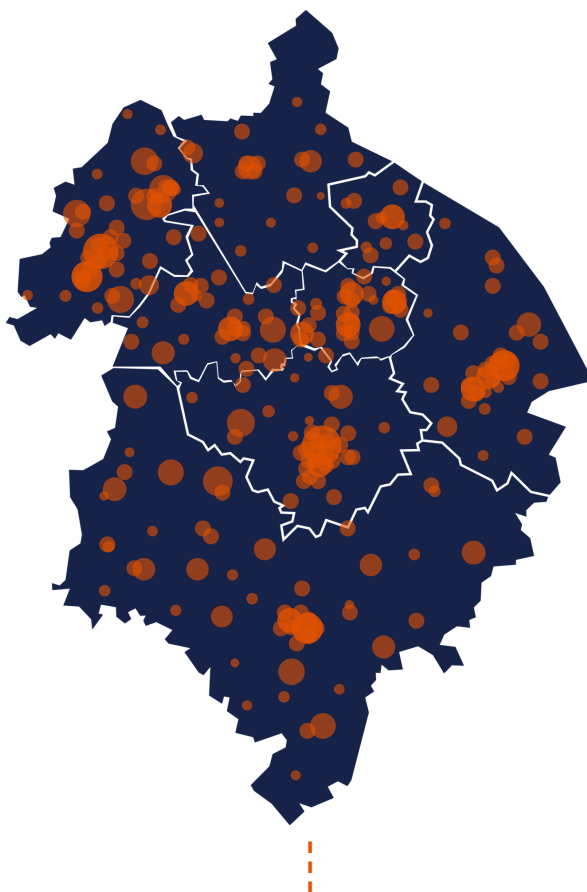
**66,425**

There were a whopping 66,425 Energy and Green sector jobs in the West Midlands in 2018, and it's increasing every year.

# What is Life Sciences?

Life Sciences refers to the application of biology and technology to health improvement, including biopharmaceuticals, medical technology, genomics, diagnostics and digital health. Life sciences cover some of the most challenging yet rewarding subjects out there. They are also some of the most exciting with medical breakthroughs occurring every day.

Example job roles in the Life Sciences include Paramedic, Computational Biologist, Research Associate, Bioinformatician, Dental Nurse, Veterinarian, Physiotherapist, Psychologist, Virologist and Epidemiologist... The list goes on and on.



The heat map to the left indicates the number of jobs posted by employers during 2019, helping you to quickly recognise areas of high and low job density around you.



Not for the faint-hearted. The job of a Snake Milker is to collect the venom of poisonous snakes in jars for use in anti-venoms and other medication.

**£47,500**

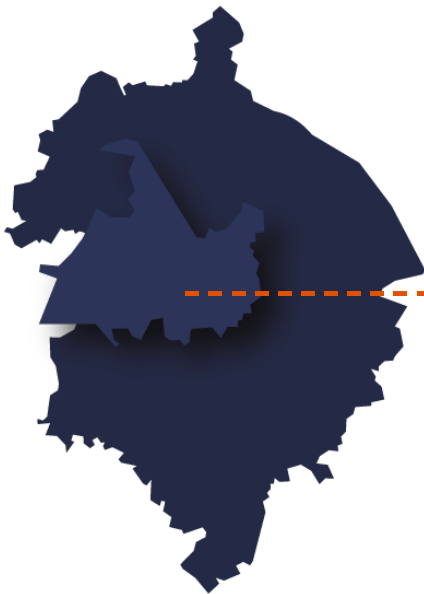
The average salary in Biotech is around £47,500 and climbs much higher with experience.

# Why Life Sciences?

Entering a world of science gives you countless opportunities. It is more than you may think; it's a world of exploration, analysis, challenges, excitement and rewards. Suppose you are passionate about sciences and want to be a pioneer, inventor or improve the lives of animals or people, then this is the sector for you.

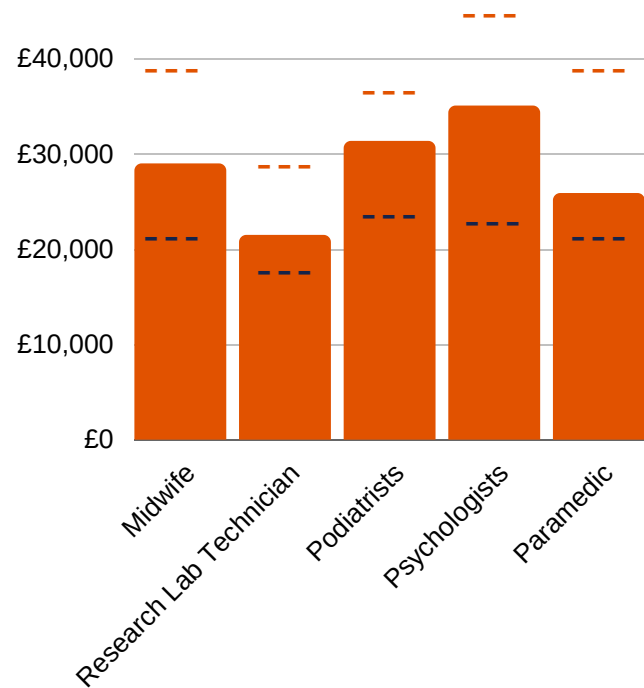
There are endless career options – you do not need to know now what you want to be, just where you want to be. For example, if you love biology, then why not work towards a biology degree? This degree can lead you into roles such as Biochemist, Biotechnologist, Microbiologist or maybe Biomedical Scientist, any many more.

Pathways can also be more specific. If you know you want to work with animals and study their behaviours, then a zoology degree is for you.



## Average Salary in UK

--- Can earn up to  
--- Average starting salary

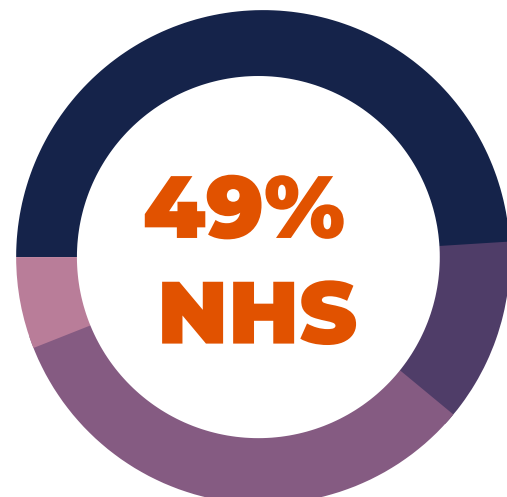


**Solihull has had an 18% increase in Life Science job postings since 2016.**

## Who's hiring?

In 2019 the NHS made up 49% of all job postings within the Life Science Sector in Solihull and the wider region.

Other businesses, for example, private health care, gyms and universities (to name just a few) made up the additional 51%. 12% of postings came from businesses hiring between 101 and 200 candidates, 33% came from businesses employing between 11 and 100 candidates, and 6% came from businesses hiring up to 10 candidates in the year.





**£35,000**

The average wage of a UK NHS nurse is around £35,000.

## Did you know?

Some universities offer courses with a foundation year for those without the necessary entry qualifications.

## Did you know?

Students are entitled to at least £5,000 a year towards their studies while at university and will never have to pay it back.

# Qualified Nurse

**A newly qualified Band 5 NHS Nurse in 2020 will earn £24,907.**

## Apprenticeships

A nursing degree apprenticeship consists of four years working within the NHS while gaining a qualification.

## University

There are some degree courses that allow you to study in two fields. These are known as 'dual field' degrees. The fields are adult nursing, children's nursing, learning disability nursing and mental health nursing.

**94%**

Nursing is the UK's most employable type of degree, with 94% of students getting a job within six months of finishing their course.



Nursing degrees aren't all about having your nose in a book. There is lots of practical hands-on experience with patients.

## Other Courses

To go to university or become a nursing degree apprentice you can do a health and social care Level 3 course at Solihull College.

Other courses to consider are:

Access courses e.g. access to nursing

Pearson BTEC Level 3 Diplomas

OCR Cambridge Technicals

International Baccalaureate (IB).

## A Levels

You will need a minimum of two (usually three) A Levels to progress onto a Level 4 qualification. At least one in the following subject: biology, chemistry, physics, applied science, health and social care, psychology, sociology or physical education.

# School

To progress to the next stage you usually need a minimum of 5 GCSE's grade 4 or above which should include maths, at least one science and English language or literature.



# Did you know?

**2022**

Birmingham's Life Sciences Park is due to open in 2022 accelerating life sciences research in your area.



## Sir David Attenborough

studied natural sciences before joining the BBC in 1952.



## Employment drive

There is a drive for higher levels of employment and better health outcomes for citizens within the West Midlands.

**+18%**

Despite a 33% decrease in the wider region job postings in 2019 compared to 2016, Solihull has had an 18% increase!



## Significant investments

in skills and development within the Life Science sector.



## Life Science key skills

Communication, research, organisational, leadership and planning.

# Different ways of working

## Full time

- The standard way of work with over 21 million people working full time in the UK
- A contracted role with set hours each week during a set periods
- While there are no set hours, anything over 35 hours would generally be classed as full-time work
- Full-time work offers stability with a regular set income, pension, holiday pay, sick pay, and employment rights



**35+**  
**hours**



## Part time

- Part-time work is when an employee works fewer hours than the employer's full-time hours
- The number of hours worked is reduced by either shorter days or reduced days in the week
- Over 8 million people work part-time in the UK
- Part-time work can be beneficial for anyone looking to fit work around other commitments, for example, school or college
- A part-time role is contracted and offers the stability of a full-time job

## Zero hours

- Zero-hour contract is a term used to describe a contract where the employer is not obliged to provide any minimum or maximum number of working hours to the employee
- A zero-hours contract allows employees to have flexibility in setting their own days and times when they can work
- Beneficial to students who may have changing lecture times or wish to take time off to visit home during long periods like the summer
- The contract allows the employer to bring staff in during busy periods and keep teams to a minimum when it is quiet



## Contractual work

- Contractual work could include roles such as Contractor, Freelancer or Consultant
- Contractual workers are brought in for set periods to fill a skills gap
- This type of work offers the flexibility to accept or turn down job offers to suit your needs and desires and set your own pay rate
- You will work for multiple companies allowing you to gain skills and valuable experiences
- You will need to look after your own financial affairs including taxes and budgeting for periods out of work, for example between contracts, on holidays or if unwell



## Temporary

- Contracts can vary in time to cover roles within a business, for example when a member of staff is on leave or over busy periods
- Standard employment benefits are usually given during this fixed term of employment

## Gig economy

- Close to 5 million people in the UK work in the gig economy workers
- Instead of a regular wage, workers get paid per gig. The amount is either set by the business or the contractor depending on the gig and experience
- Job examples include Couriers, Ride-Hailing Drivers and Video Producers
- Gig economy work can vary significantly in the times and days required to work - a Food Delivery Driver could be mainly working evenings while a Film Director will be working all day, most days for months at a time



**4m**

**over 4 million  
can work  
flexi-time in UK**



## Flexi time

- Flexi time offers full time and part-time employees the flexibility to fit their working hours around their individual needs
- Over 4 million people in the UK have contracts that will allow for the use of flexi-time
- Work schedules can change week to week to benefit both employee and the business
- An example of flexi-time could be an Office Worker working 8am-4pm (usual office hours being 9am-5pm)

# Why part time work is perfect for students

Many students overlook the benefits of getting a part-time job during their time in school, college or university, due to being so busy with coursework or exams. However, having a part-time job while studying could be beneficial and here is why:



Finding a part-time job is a great way to gain more money, reduce debt, boost your CV and give you a route to a full-time career.



When applying for further education, a part-time job may help you stand out from other candidates.



Many employers offer flexible schedules to work around personal and educational needs.



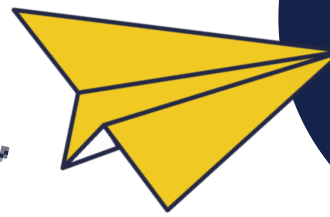
Experience in the world of work can help you decide what you want to do or what you don't want to do.

You can gain 'employability' skills like:

- Communication
- Problem solving
- Organisation and time management
- Ambition
- Ability to work under pressure
- Teamwork
- Training and leadership skills
- Customer service
- Reliability



Some students see their grades improve when they begin working, usually, as a result of learning to organise and plan their study time effectively as well as the developed skill of being able to cope under pressure.



## Age 13 to 14 working rules

**School days:** Up to two hours a day from 7am-7pm outside of school hours

**Saturdays:**

Up to five hours between 7am-7pm

**Sundays:**

Up to two hours between 7am and 7pm

**Term-time (including weekends):**

Up to a 12 hours a week

**School holidays (Including weekends):**

Up to 25 hours a week, five hours a day, between 7am-7pm Mon-Sat

## Age 15 to 16 working rules

**School days:** Up to two hours a day from 7am-7pm outside of school hours

**Saturdays:**

Up to eight hours between 7am-7pm

**Sundays:**

Up to two hours between 7am-7pm

**Term-time (including weekends):**

Up to 12 hours a week

**School holidays (Including weekends):**

Up to 35 hours a week, eight hours a day, between 7am-7pm Mon-Sat

## While you are still at school and of compulsory school age, you cannot:

- Work on a milk round
- Work in a cinema, theatre, dance hall, disco or night club
- Sell or deliver alcohol
- Work in a petrol station
- Work in a commercial kitchen
- Undertake food preparation
- Collect or sort refuse
- Window clean or do any job which involves you being more than three metres off the ground
- Do a job which might bring you into contact with harmful chemicals
- Call at people's houses to collect money
- Agricultural and horticultural work, unless age 14 years and if only employed on an occasional basis by your parents/carers
- Be exposed to adult material which is considered unsuitable for children
- Work in telephone sales
- Work in a slaughterhouse, abattoir or butcher's shop
- Work in a fairground or arcade
- Work in personal care in a residential or nursing home

**For rules and advice on your working rights for anyone under 18 visit:**  
[www.acas.org.uk/young-workers-apprentices-and-work-experience](http://www.acas.org.uk/young-workers-apprentices-and-work-experience)

# Tomorrow's Working World

## Worldwide changes

## What's happening and how does this impact you and your career?

## Which jobs will be a priority?

Environmental concerns and changes to the global climate.



People are looking for greener energies and developing technologies which are more efficient and sustainable. The importance of looking after the planet has never been more recognised.

Moving towards a greener world will affect all sectors. Industries are switching over to ecological technologies and changing how we work with an increase in remote working and digital technology.

Engineering Automotive Design, Chemical Processing, Recycling and Waste Solutions, Agriculture Energy and Utilities Innovation

Ever-increasing need for speed, turnarounds and direct routes to a result.



Convenience and fast delivery of projects is a priority. With an economy vastly effected by global changes and the pandemic, businesses are finding ways to save money and speed up processes to help them survive.

Businesses are becoming more accessible via digital platforms and using technology to reduce overheads, providing opportunities in roles within the technology, manufacturing and digital sectors.

Advanced Manufacturing, Business Developers, Creative App Development, Coding, Digital Marketing, Professional Services, Lawyer, Sales Representative, Underwriter, Auctioneer, Judge, Coroner, Valuer

Technology is advancing every day with new technologies emerging at an ever-growing rate.



The world is changing as a result of emerging technology. Some jobs and market requirements have become redundant because of new ways of working.

Technologies will keep changing, and therefore different skills will be desired in areas such as IT, design, mechanics and STEM subjects.

Engineering, Advanced Manufacturing, Creative Media roles, ICT Data Analysts, Aerospace, Aeronautical, Electronics, Energy Technology

Life expectancy is longer than ever before with the average person living to 81 years old.



Due to medical advances and the development of life sciences, people are living for longer than ever before.

You will be working longer due to the ever-increasing retirement age. Although this may not be something you are thinking about now, it will be important to you when you get older. You want to find a career that makes you happy and fulfils you.

All sectors



# What next?

The information in this brochure only scratches the surface when it comes to choosing your career pathway. Now it is time to start looking at your options and choices, carry out research and discover what is out there for you. Follow your passions and make a career out of what you love. Opportunities are endless. You just need to start looking for them.

## ROUTING for YOU



## Sources & Useful Links

### Useful links:

- <https://nationalcareers.service.gov.uk/explore-careers>
- [www.statista.com](http://www.statista.com)
- [http://www.lmiforall.org.uk/explore\\_lmi/](http://www.lmiforall.org.uk/explore_lmi/)
- <https://www.ucas.com/>

### Advanced Manufacturing:

- <https://nationalcareers.service.gov.uk/job-profiles/mechanical-engineer>

### Business, Professional and Financial:

- <https://gbslep.co.uk/what-we-do/business/business-professional-financial-services>

### Creative:

- <https://www.gov.uk/government/news/uks-creative-industries-contributes-almost-13-million-to-the-uk-economy-every-hour>
- <https://www.wmca.org.uk/news/creative-industries-in-west-midlands-to-get-12m-boost-from-government/>
- [https://www.thecreativeindustries.co.uk/media/529975/cic\\_3yr\\_export\\_strategy\\_v3\\_singles.pdf](https://www.thecreativeindustries.co.uk/media/529975/cic_3yr_export_strategy_v3_singles.pdf)
- <https://www.creativeindustriesfederation.com/statistics>

### Energy Technology:

- <http://www.nef.org.uk/knowledge-hub/other-renewable-energy/renewable-energy-technologies>
- <https://www.prospects.ac.uk/jobs-and-work-experience/job-sectors/energy-and-utilities/renewable-energy-careers>
- <https://www.bmrsolutions.co.uk/a-beginners-guide-to-careers-in-renewable-energy/>
- <https://www.careeronestop.org/GreenCareers/ExploreGreenCareers/renewable-energy.aspx>
- <https://www.statista.com/statistics/1094309/renewable-energy-market-size-global/>
- <https://www.quanta-cs.com/blogs/2017-10/why-work-in-renewable-energies>

### Life Science:

- <https://www.healthcareers.nhs.uk/explore-roles>
- <https://career-advice.jobs.ac.uk/resources/what-jobs-could-i-do-in-life-sciences/>
- <https://gbslep.co.uk/what-we-do/business/life-sciences-healthcare>
- <https://www.lateet.com/8-cool-facts-to-know-about-a-career-in-life-sciences/>

THE CAREERS &  
ENTERPRISE  
COMPANY



# ROUTING

for you 